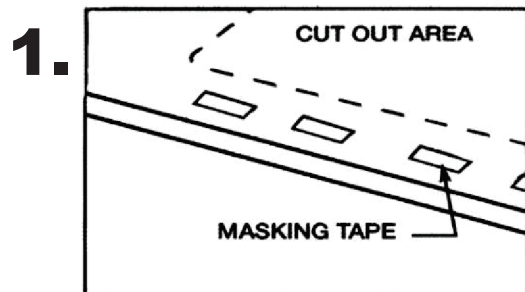


Installation instruction for granite sinks

This instruction is for installing granite sink.
Before installing the sink, inspect for damage.
Do not install damaged unit.

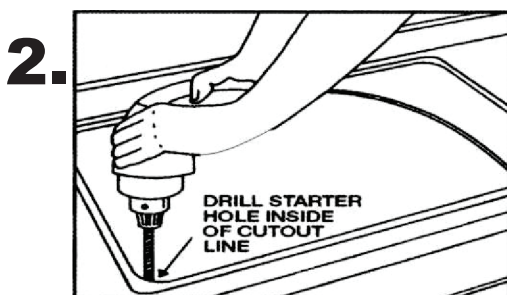


Drop in side:

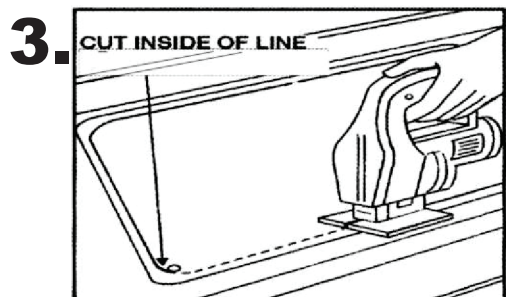
1. Select the drop-in kitchen sink template that applies to the model sink you are installing. Cut out the inside of the template and discard the cutout portion. Locate the template front to rear and right to left on the counter top so the bowl will not interfere with the cabinets below. Attach the template to the counter top with masking tape and draw a pencil line around the inside of the template. Discard the template.

Or

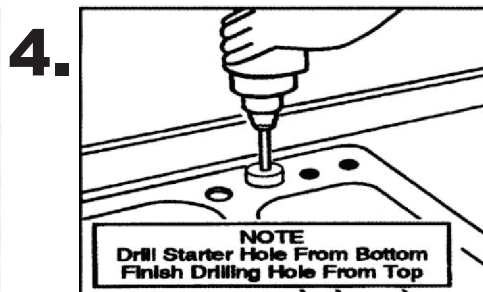
Invert sink and position onto the counter top. Locate sink front to rear and right to left so the bowl will not interfere with the cabinets below. Trace a pencil line around the outside edge of the sink and remove the sink from the counter top. Measure in 3/7" /13mm/ from the initial sink outline and draw a second line inside the first.



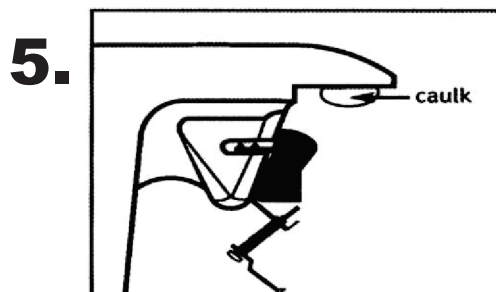
Drill starter hole inside of cutout line.



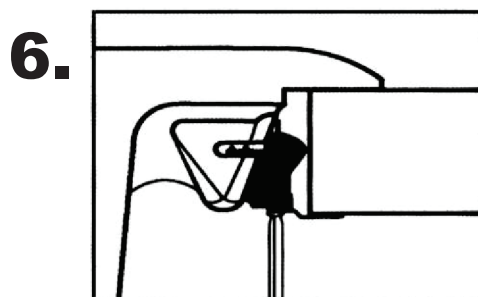
Using a saber saw, cut inside of cutout line. Trial fit sink to check proper fit.



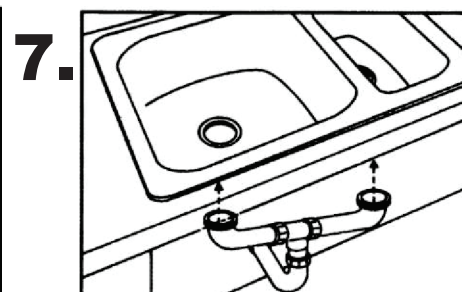
Identify fixture hole locations. Drill a starter hole from reverse side. Working from the top side as illustrated, position a hole saw on the drill to complete the fixture hole. To cool the hole saw and sink surface, a light application of water, periodically, is necessary. Attach faucet, drain, and accessories according to manufacturer's instructions.



Insert the sink clips into the slots of each sink boss. Apply a bead of caulk /not included/ to the underside of the sink flange. For final fit, make sure each sink clip is pulled back as illustrated. Position the sink into the counter top opening.



Secure the sink by pivoting the sink clips into the position illustrated and tighten screws in the front, then tighten rear and side screws.



Connect all faucets supply lines, disposal /if available/, and drain trap fittings per manufacturer's instructions.

GRANITE COMPOSITE KITCHEN SINK CARE AND CLEANING

Granite composite kitchen sink is increasingly becoming the popular choice by people, as it truly adds to the beauty and glamour of the kitchen. It is best able to withstand the day to day pressures, in terms of denting, staining and cutting. The most wonderful feature of using the granite kitchen sink is that, it does not lose its luster soon. Apart from being long-lasting, it is scratch resistant, lustrous and non porous as well.

However, there are some guidelines that you must follow, before using a granite sink.

Read on to know the do's and don'ts of granite kitchen sink.

Do's:

- 1) Instead of cleaning the granite sink once in a week or fortnightly, clean it every day.
- 2) After every use, make sure that the sink is clean, dry and exposed to room atmosphere. For this, rinse and towel dry the sink in order to minimize major cleanups.
- 3) Ensure that there is no standing water in the sink, as it may build up mineral deposits. Remember, the quality of water plays a dominant role in maintenance of the sink.
- 4) In case you have a high mineral content water supply, mineral deposits are bound to occur. For removal of mineral deposits, use a dilute solution of vinegar and water for washing the sink area. Thereafter, flush the surface with water.
- 5) Make use of the mildest cleaning procedure to clean your sink effectively.
- 6) To remove everyday stains from the kitchen, dip a damp cloth in a solution of dishwashing liquid.
- 7) If there are stubborn stains, the best bet would be to use an abrasive pad instead of a cloth.
- 8) In case there are stains and marks that have seeped in, in the bowl, use bleach and water solution. For this, mix water and bleach in the ratio of 40:1. Soak the bowl in the solution and keep it overnight. In the morning, drain the solution and rinse it with water.
- 9) Dragging metal pots and pans on the granite sink causes metal residue. To remove the metal marking, use a soft nylon brush and a liquid soap to scrub the entire area, in a circular manner.

Don'ts

- 1) Avoid dropping any sharp object on the granite sink.
- 2) Stop using any metal scouring pads or wire wool, as they leave a metal residue on the surface of the sink.
- 3) Mild steel or cast iron cookware left for extended periods of time cause staining of the sink.
- 4) Make sure that the rubber dish mats, wet sponges, or cleaning pads are removed from the sink after every use, otherwise these might cause staining and discoloration of the sink surface.
- 5) Make sure concentrated bleaches or products containing chlorinated solvents or formic acid are kept away from the sink. These cause discoloration in the sink.
- 6) Avoid using the sink as a cutting surface.